

## KNOWLEDGE BASE ARTICLE

---

# Change Color Theme for Vitextra Filter Web Part

# Disclaimer

For the purposes of this Disclaimer:

- **Company** (referred to as either "the Company", "We", "Us" or "Our" in this Disclaimer) refers to Vitextra SIA, LV-1009 Riga, Matise iela 61 - 25.
- **Document** refers to the Knowledgebase Article.
- **You** means the individual accessing the Document, or the company, or other legal entity on behalf of which such individual is accessing or using the Document, as applicable.
- **Website** refers to Vitextra, accessible from <https://vitextra.com>

## Disclaimer

The information contained in the Document is for general information purposes only.

The Company assumes no responsibility for errors or omissions in the contents of the Document.

In no event shall the Company be liable for any special, direct, indirect, consequential, or incidental damages or any damages whatsoever, whether in an action of contract, negligence, or other torts, arising out of or in connection with the use of the contents of the Document. The Company reserves the right to make additions, deletions, or modifications to the contents in the Document at any time without prior notice.

## Errors and Omissions Disclaimer

The information given by the Document is for general guidance on matters of interest only. Therefore, errors can occur even if the Company takes every precaution to ensure that the Document's content is current and accurate. Plus, given the changing nature of laws, rules, and regulations, there may be delays, omissions, or inaccuracies in the information contained in the Document.

The Company is not responsible for any errors or omissions, or for the results obtained from the use of this information.

## Fair Use Disclaimer

The Company may use copyrighted material that the copyright owner has not explicitly authorized. The Company is making such material available for criticism, comment, news reporting, teaching, scholarship, or research.

The Company believes this constitutes a "fair use" of any such copyrighted material as provided for in section 107 of the United States Copyright law.

If You wish to use copyrighted material from the Document for your own purposes that go beyond fair use, You must obtain permission from the copyright owner.

## "Use at Your Own Risk" Disclaimer

All information in the Document is provided "as is", with no guarantee of completeness, accuracy, timeliness or of the results obtained from the use of this information, and without warranty of any kind, express or implied, including, but not limited to warranties of performance, merchantability and fitness for a particular purpose.

The Company will not be liable to You or anyone else for any decision made or action taken in reliance on the information given by the Service or for any consequential, special or similar damages, even if advised of the possibility of such damages.

## Contact Us

If you have any questions about this Disclaimer, You can contact Us by email: [support@vitextra.com](mailto:support@vitextra.com).

# Table of Contents

<b>Introduction</b>	4
<b>Apply Styles</b>	4
<b>CSS References</b>	6
<b>Examples</b>	7
<b>Change Color Scheme</b>	7
<b>Change Label Style</b>	9
<b>Color of the List</b>	10
<b>Alignment of the buttons</b>	11

This article describes how to change the color scheme for Vitextra List Filter.

## Introduction

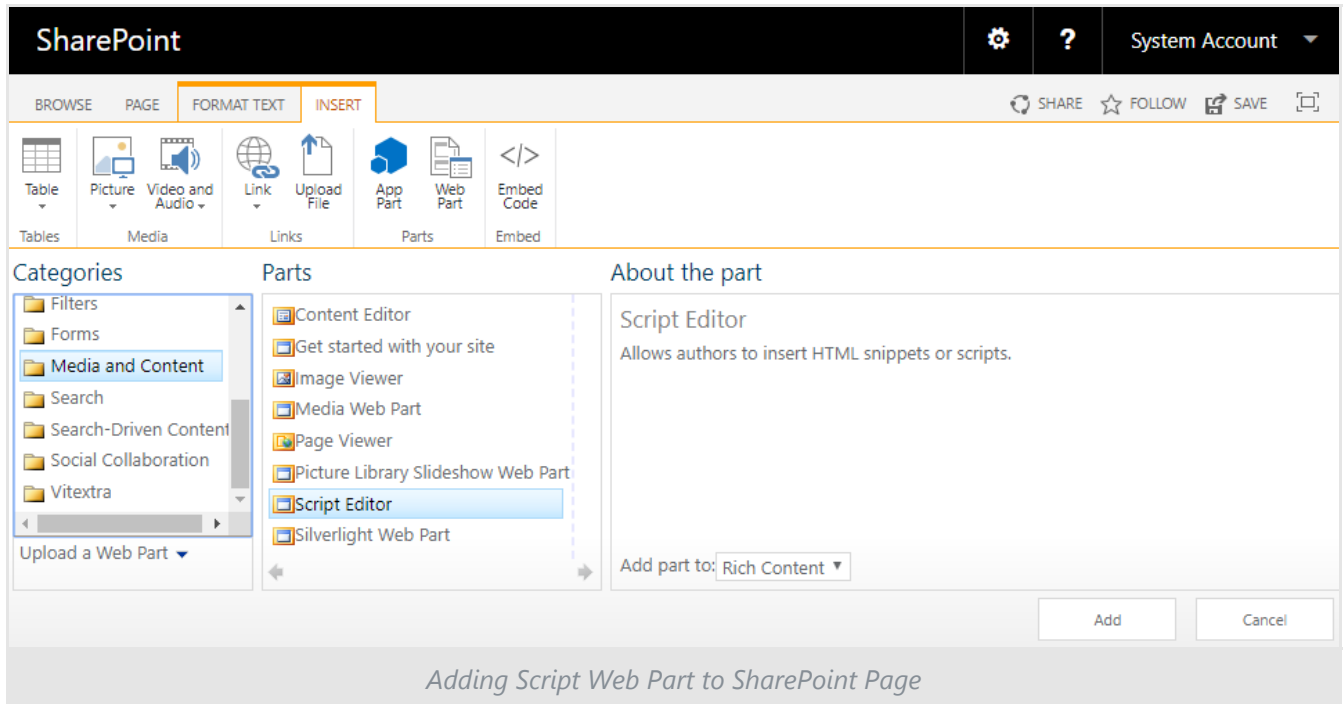
[Vitextra List Filter Web Part](#) allows building custom filtering panel to search for data within SharePoint List and Document Library. The filtering panel contains controls such as buttons, lists, labels, and others. This article describes how to change the appearance of the Filter Web Part according to your corporate portal branding or theme.

HTML controls provided by List Filter have specific CSS classes that can be used to apply your color theme.

## Apply Styles

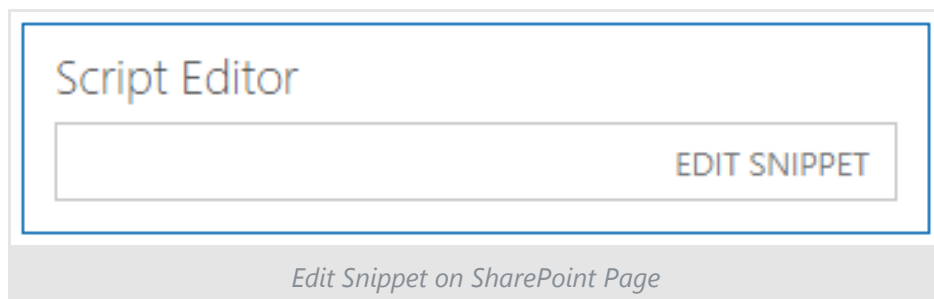
To apply custom style to the Filter Web Part you need to register your custom CSS on the page. The simplest way to achieve this goal is to add a **Script Editor** web part to the page where the filter is presented.

To add a Script Editor Web Part open the page in edit mode, put the cursor inside the web part zone, go **INSERT - Web Part**, and choose **Script Editor Web Part** under **Media and Content** category:



Click **Add** button to insert the web part to the page.

Click **EDIT SNIPPET** on the Script Editor Web Part.



In the snippet dialog paste your styles and click **Insert**

Embed

×

Paste some script or embed code below.

```

<style>
.spfilter{
/* your custom style */
}
</style>

```

Insert

Cancel

Edit Snippet on SharePoint Page

## Tip

Add Script Editor Web Part at the bottom of the page to avoid empty space in a significant part of the page.

## CSS References

Element	Reference	Parent
Filter Panel	.spfilter	
Toolbar Panel	.spfilter-toolbar	.spfilter
Action Buttons Panel	.spfilter-footer	.spfilter
Filter Button	.spfilter-button-filter	.spfilter-footer
Export Button	.spfilter-button-export	.spfilter-footer
Fields Container	.spfilter-fields	.spfilter
Field	.spfilter-field	.spfilter-fields
Field Label	.spfilter-field-label	.spfilter-field

Element	Reference	Parent
Filtering Control	.spfilter-field-input	.spfilter-field
List Control	.k-dropdown-wrap	.spfilter-field-input

#### Note

Do not override List control styles directly via **.k-dropdown-wrap** selector. Instead, use **.spfilter .k-dropdown-wrap** one.

## Examples

Here are some examples of how to apply custom styles to the List Filter Web Part.

## Change Color Scheme

There are six colors you can override in the Filter Web Part:

- primary (#0072c6)
- primary on hover (#004c84)
- primary on active (#00467a)
- secondary (#f4f4f4)
- secondary on hover (#e2e2e2)
- secondary on active (#0072c6)

The primary color is used for **Filter** and **Export** button, second is used for toolbar buttons **Share**, **Fields**, **Settings**.

Example #1. Change the color scheme to orange

```
<style>
/* Color of the primary buttons */
.spfilter-footer button {
  background-color: #ca5010 !important;
```

```
    border-color: #ca5010 !important;
}
.spfilter-footer button:hover {
    background-color: #da3b01 !important;
    border-color: #da3b01 !important;
}
.spfilter-footer button:active {
    background-color: #a4262c !important;
    border-color: #a4262c !important;
}
/* Color of the secondary buttons */
.spfilter-toolbar button,
.spfilter-toolbar button:hover{
    background-color: #c19c00 !important;
    border-color: #c19c00 !important;
    color: #fff !important;
}
.spfilter-toolbar button:active {
    background-color: #ca5010 !important;
    border-color: #ca5010 !important;
}
</style>
```

Result:



Share Fields Settings

<b>First Name</b>	<b>Title</b>
<input type="text"/>	<input type="text"/>
<b>Maker</b>	<b>Model</b>
<input type="text"/>	<input type="text" value="is equal to"/>
<b>VIN</b>	<b>Employee</b>
<input type="text"/>	<input type="text" value="Enter names or email addresses..."/>

Apply Export




SharePoint Filter Web Part. Custom color scheme

## Change Label Style

Example #2. Change field label style

```
<style>
/* Field Label Style */
.spfilter-field-label {
  font-weight: normal;
  text-transform: uppercase;
}
</style>
```

Result:

 Share  Fields  Settings

FIRST NAME	TITLE
<input type="text"/>	<input type="text"/>
MAKER	MODEL
<input type="text"/>	<input type="text" value="is equal to"/>
VIN	EMPLOYEE
<input type="text"/>	<input type="text" value="Enter names or email addresses..."/>

Apply

Export

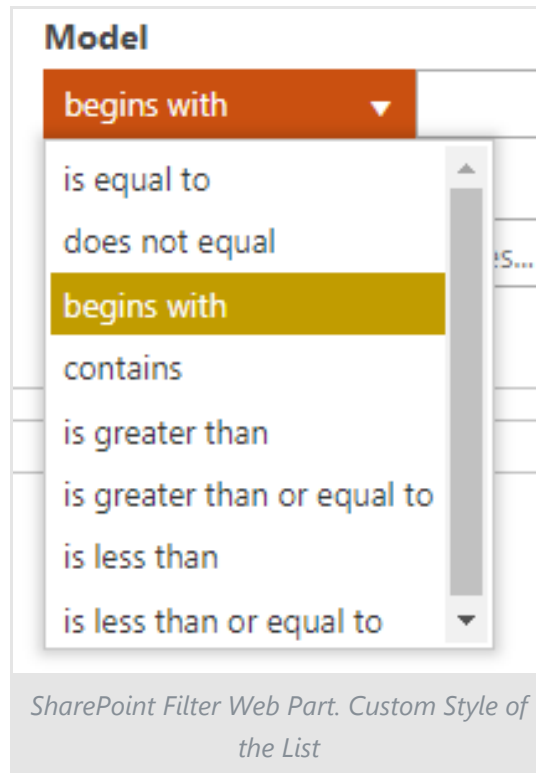
SharePoint Filter Web Part. Custom Label Style

## Color of the List

Example #3. Change the color of List control

```
<style>
/* Active List Style */
.spfilter .k-dropdown-wrap.k-state-active {
  background-color: #ca5010 !important;
  border-color: #ca5010 !important;
}
/* Selected Item Style */
.spfilter .k-list>.k-item.k-state-focused {
  background-color: #c19c00 !important;
  border-color: #c19c00 !important;
  color: #fff !important;
}
</style>
```

Result:



## Alignment of the buttons

Example #4. Move the Filter and Export buttons to the right

```
<style>
/* Buttons position */
.spfilter-footer {
  text-align: right;
}
</style>
```

Result:

ShareFieldsSettings

First Name

Maker

VIN

Title

Model

is equal to

Employee

Enter names or email addresses...

ApplyExport

SharePoint Filter Web Part. Right-Aligned Buttons